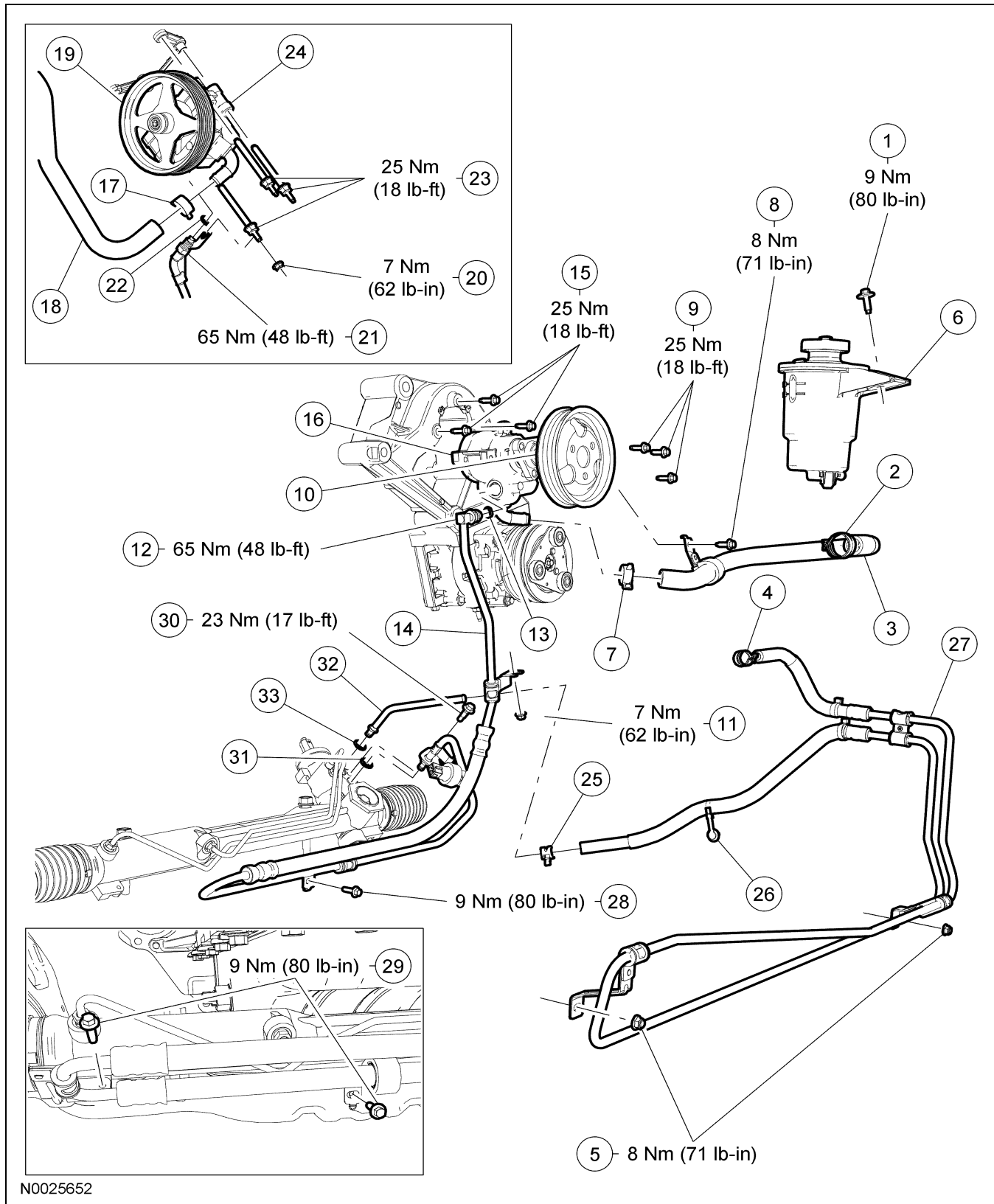


# REMOVAL AND INSTALLATION

## Power Steering System — Exploded View



N0025652

**REMOVAL AND INSTALLATION (Continued)**

Item	Part Number	Description
1	W503924-S439	Fluid reservoir bolt
2	—	Suction hose clamp (part of 3E525)
3	3E525	Suction hose
4	—	Fluid cooler-to-reservoir hose clamp (part of 3F780)
5	W520101-S440	Fluid cooler nuts (2 required)
6	3R700	Power steering fluid reservoir
7	—	Suction hose clamp (part of 3E525) (4.0L engine)
8	W500213-S437	Suction hose bracket bolt (4.0L engine)
9	N605784-S	Power steering pump pulley bolts (3 required) (4.0L engine)
10	3A733	Power steering pump pulley (4.0L engine)
11	W520101-S440	Pressure line bracket nut (4.0L engine)
12	—	Pressure line fitting nut (4.0L engine)
13	388898-S	Teflon® seal (4.0L engine)
14	3A719	Pressure line
15	W700839-S	Power steering pump bolts (3 required) (4.0L engine)
16	3A674	Power steering pump (4.0L engine)
17	3E525	Suction hose clamp (4.6L engine)
18	3E525	Suction hose (4.6L engine)

(Continued)

Item	Part Number	Description
19	3D763	Power steering pump pulley (4.6L engine)
20	W520101-S440	Pressure line bracket nut (4.6L engine)
21	—	Pressure line fitting nut (4.6L engine)
22	388898-S	Teflon® seal (4.6L engine)
23	W705023-S	Power steering pump bolts (3 required) (4.6L engine)
24	3A696	Power steering pump (4.6L engine)
25	—	Return line-to-fluid cooler hose clamp (part of 3F780)
26	—	Pin-type retainer (part of 3F780)
27	3F780	Fluid cooler
28	W505255-S438	Pressure line bracket-to-crossmember bolt (4.0L engine)
29	W505255-S438	Pressure line bracket-to-crossmember bolts (2 required) (4.6L engine)
30	W707622-S439	Power steering line clamp plate bolt
31	3F886-AA	O-ring seal (pressure line)
32	—	Steering gear-to-fluid cooler return tube (part of 3F780)
33	3F886-AA	O-ring seal (return line)

1. For additional information, refer to the procedures in this section.