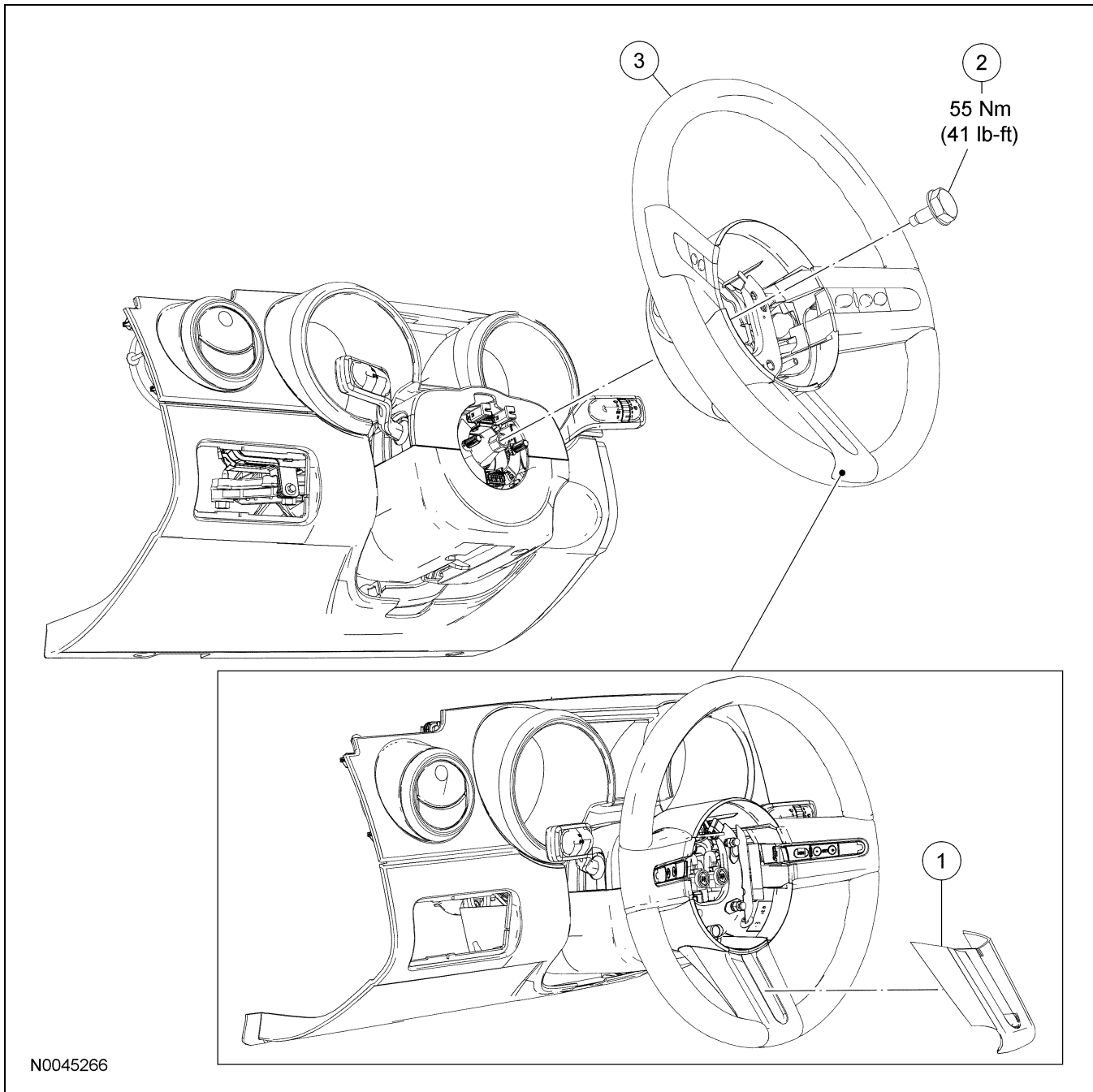


## REMOVAL AND INSTALLATION

### Steering Wheel




N0045266

Item	Part Number	Description
1	3F830	Steering wheel spoke finish panel (3 required)
2	043B13	Steering wheel bolt
3	3600	Steering wheel

#### Removal and Installation

1. Place the steering wheel in the straight-ahead position and turn the ignition switch to the OFF position.
2. Remove the driver air bag module. For additional information, refer to Section 501-20B.

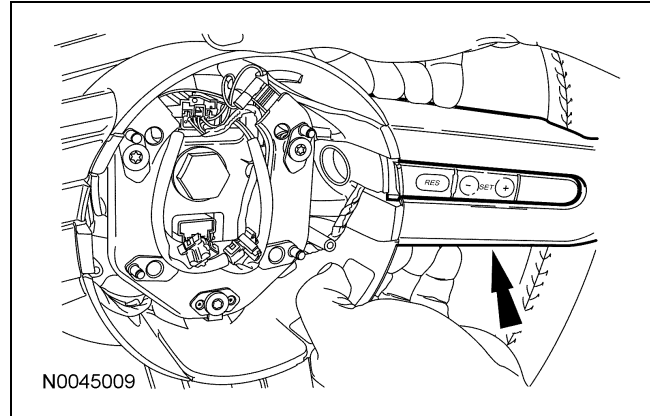
**REMOVAL AND INSTALLATION (Continued)**

3.  **CAUTION:** Do not use a screwdriver or prying device to remove the steering wheel spoke finish panel(s) or damage to the steering wheel can occur. Place your fingers near the base of the wheel spoke and gently pull upwards to remove the finish panel(s).

**NOTE:** The steering wheel spoke finish panel(s) can be serviced separately. A new steering wheel does not need to be installed.

**NOTE:** It is not necessary to remove the steering wheel when installing new steering wheel spoke finish panel(s).

If necessary, remove the steering wheel spoke finish panel(s).



4. Remove and discard the steering wheel bolt.
  - To install, tighten to 55 Nm (41 lb-ft).
5. Remove the steering wheel.
  - Route the connectors for the clockspring through the steering wheel.
6. To install, reverse the removal procedure.