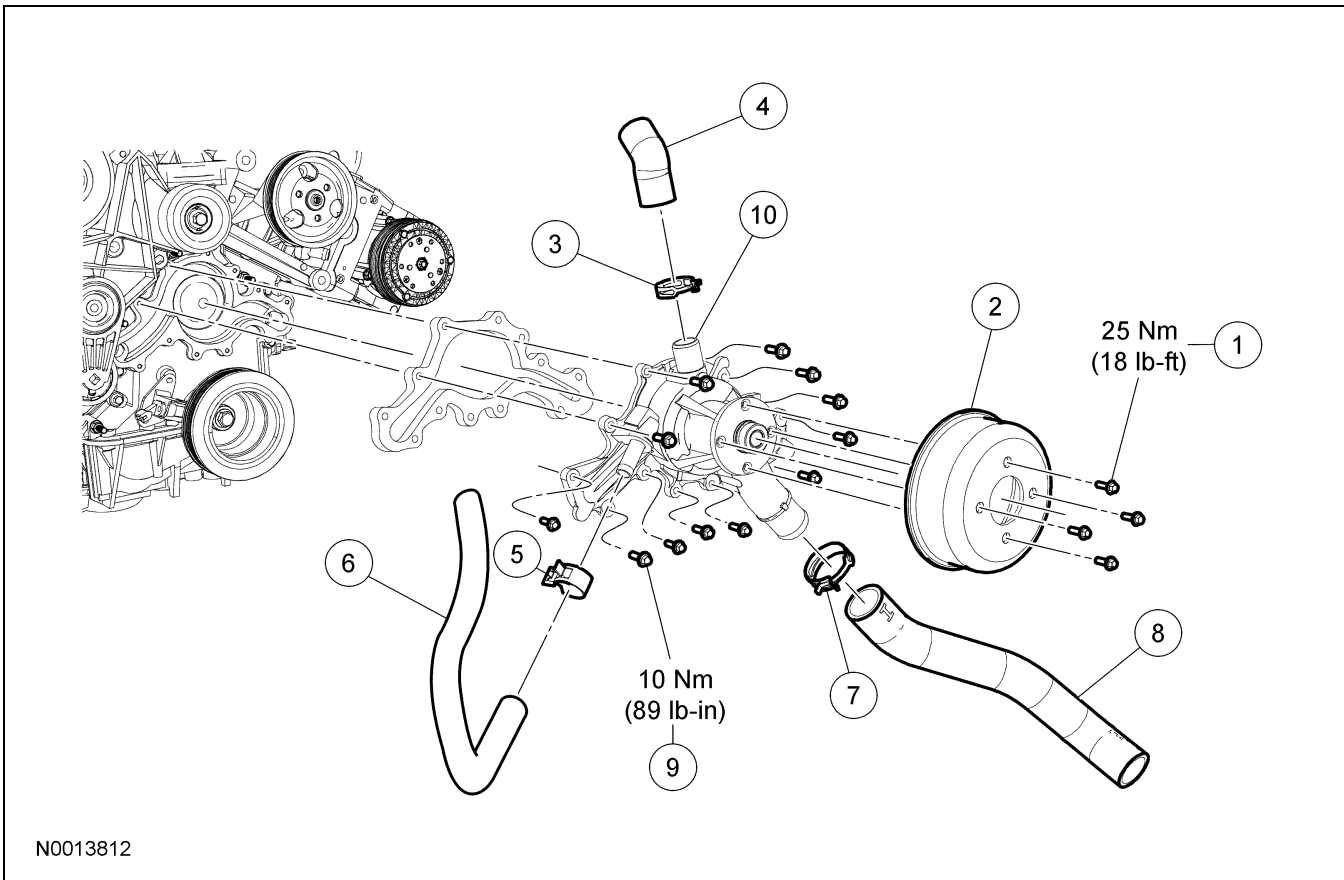


REMOVAL AND INSTALLATION

Coolant Pump — 4.0L SOHC

Material

Item	Specification
Metal Surface Cleaner ZC-21	WSE-M5B392-A



Item	Part Number	Description
1	N807938	Coolant pump pulley bolt (4 required)
2	8509	Coolant pump pulley
3	8287	Hose clamp
4	8548	Thermostat housing-to-coolant pump hose
5	8287	Hose clamp
6	8287	Heater hose
7	8287	Hose clamp
8	8286	Radiator-to-coolant pump hose
9	500014	Coolant pump bolts (12 required)
10	8501	Coolant pump

Removal and Installation

1. Drain the engine coolant. For additional information, refer to Cooling System Draining, Filling and Bleeding in this section.
2. Remove the air cleaner outlet pipe. For additional information, refer to Section 303-12.
3. Loosen the 4 coolant pump pulley bolts.
4. Remove the accessory drive belt. For additional information, refer to Section 303-05.

REMOVAL AND INSTALLATION (Continued)

5. Remove the 4 coolant pump pulley bolts and the coolant pump pulley.
 - To install, tighten to 25 Nm (18 lb-ft).
 6. Disconnect the thermostat housing-to-coolant pump hose and position aside.
 7. Disconnect the heater hose and position aside.
 8. Disconnect the radiator-to-coolant pump hose and position aside.
 9. Remove the 12 coolant pump bolts and the coolant pump.
 - Discard the coolant pump gasket.
 - Use metal surface cleaner and a suitable plastic or wooden scraper to clean the sealing surfaces.
 - To install, tighten to 10 Nm (89 lb-in).
 10. To install, reverse the removal procedure.
 - Install a new coolant pump gasket.
 11. Fill and bleed the cooling system. For additional information, refer to Cooling System Draining, Filling and Bleeding in this section.
-